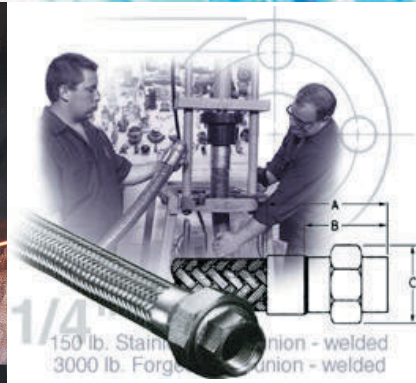
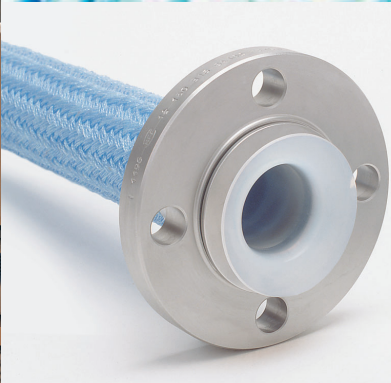
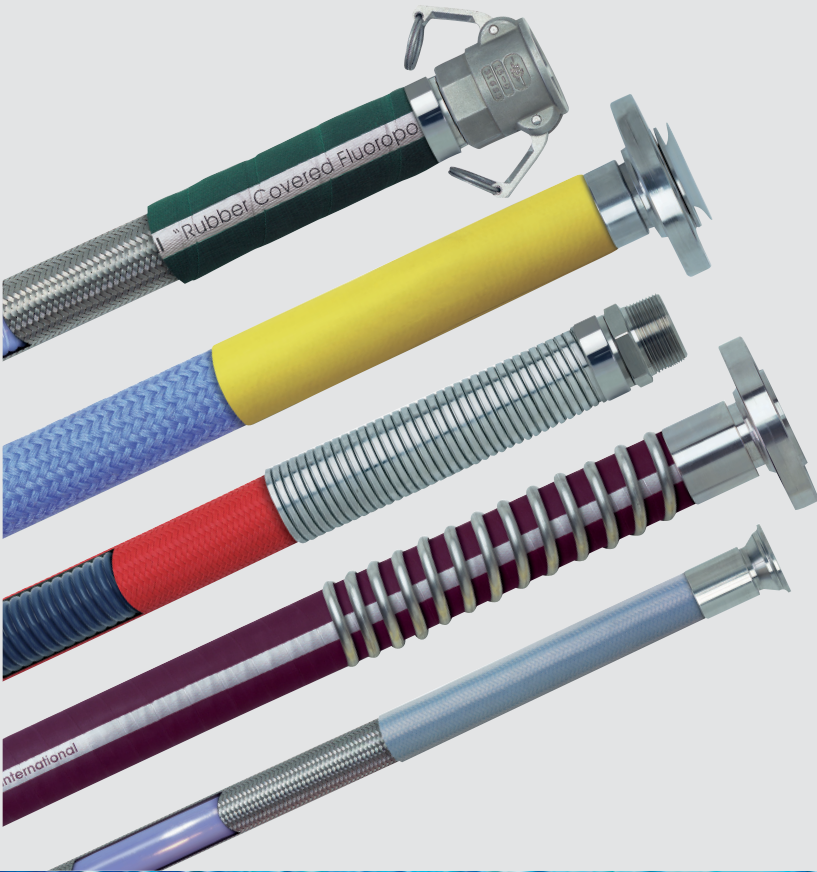




# Stainless Steel and Teflon® Hose Fabrication



**PEERLESS M.S. CO., INC.**

79 Perry Street Buffalo NY 14203 Telephone (716) 852-4784 Fax (716) 852-5458 [www.peerless-inc.com](http://www.peerless-inc.com)



*Since 1914, Peerless has supported our customers by providing them with the highest quality fabricated hose assemblies, in conjunction with peerless service. Today, through a portfolio of leading manufacturers and a highly experienced sales team, we strive to offer the best solutions to your flexible connection needs. With our compilation of products, service and knowledge, we hope to be able to lower your total cost of doing business and become your single source for critical flexible connections.*

*We look forward to working with you in the future.*

# Table of Contents



Flexible Stainless Steel Hose - 321SS .....3

Most Flexible Stainless Steel Hose - S316SS .....4

Fittings .....5

Rubber Covered Teflon® Hose .....6

Braided Teflon® Hose .....7

How to Order .....8

The following pages contain information regarding assemblies which Peerless Mill Supply fabricates on behalf of the manufacturers of each product. Please request technical data sheets when selecting an assembly for any hazardous application.

Teflon® is a registered trademark of E.I. Dupont.





# Flexible Stainless Steel Hose

ANNUFLEX, by *Hose Master*, is the benchmark of an extensive line of high performance annular corrugated stainless steel hose. Proprietary hydroforming technology insures the maximum cycle of life of the hose, with minimum effort to flex. All annular corrugated products are available in T321 and T316L stainless steel with 304 stainless steel braid.



## Features:

- Good flexibility
- Hydroformed construction
- Sizes 1/4" to 6" I.D.
- Available in T321 or 316L stainless steel
- Handles temperatures up to 1500°F
- Low total cost of ownership
- One and two wire braid available (increased pressure rating)
- The corrosion resistance of stainless steel
- Wide variety of welded end connections

## Typical Applications:

- Breweries/Distilleries - load cells
- Bulk Storage Terminals - pump connections
- Chemical Industry\* - steam lines, process piping
- Pharmaceutical - chemical transfer
- Laundry Equipment - solvent lines
- Paper Mills - tank car unloading
- Petroleum - traced assemblies for decanted oil
- Power Generation - steam lines
- Steel Plants - cooling water for oxygen lance

## Flexible Stainless Steel Hose

The following data pertains to common I.D.'s for Annuflex with a single braid. For hose with 2 braids, no braid, or other sizes, please contact Peerless. Assemblies tested to 100 psi.

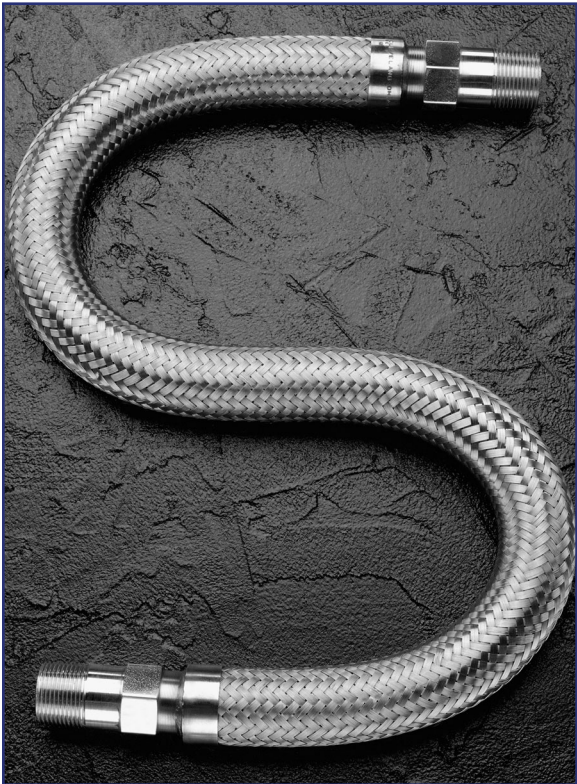
Inside Diameter (in.)	Outside Diameter (in.)	Static Min. Bend Radius (in.)	Dynamic Min. Bend Radius (in.)	Working Pressure (psi)	Burst Pressure (psi)	Weight Per Foot (lbs.)
1/4	.47	1.0	4.5	1800	7233	0.11
3/8	.71	1.2	5.0	1558	6230	0.20
1/2	0.83	1.5	5.5	1186	4743	0.22
3/4	1.22	2.1	8.0	898	3591	0.37
1	1.53	2.7	9.0	718	2872	0.50
1 1/4	1.83	3.1	10.0	645	2581	0.61
1 1/2	2.16	3.9	11.0	531	2125	0.85
2	2.69	5.1	13.0	449	1797	1.11
3	3.98	7.8	18.0	346	1384	2.06

Note: The minimum bend radius is measured from the centerline of the hose. The minimum bend radius increases with pressure (chart available). The working pressure decreases with temperature (chart available). Technical data is meant to be used as a guide. If more specific information is required, please consult Peerless. \*Consult chemical resistant table (available).

# Flexible Stainless Steel Hose

# Most Flexible Stainless Steel Hose

MASTERFLEX, by Hose Master, is the most pliable member of the annular family of hydroformed hose. This product, as well as Annuflex, far exceeds international industrial standards for flex cycles. All annular corrugated products are available in T321 and T316L stainless steel with 304 stainless steel braid



### Features:

- Exceptional flexibility
- Hydroformed construction
- Sizes 1/4" to 6" I.D.
- Available in T321 or 316L stainless steel
- Handles temperatures up to 1500°F
- Fatigue resistant
- One and two wire braid available (increased pressure rating)
- The corrosion resistance of stainless steel
- Wide variety of welded end connections

### Typical Applications:

- Breweries/Distilleries - load cells
- Bulk Storage Terminals - loading/unloading tank cars
- Chemical Industry\* - process piping
- Pharmaceutical - steam lines
- Laundry Equipment - laundry press connections
- Paper Mills - connections on rotary joints, lubricating lines
- Petroleum - bottom loading, steam, lube lines
- Power Generation - water pump connections, burner line
- Steel Plants - high temp lube lines, cooling water

### Most Flexible Stainless Steel Hose

The following data pertains to common size Masterflex with a single braid. For hose with 2 braids, no braid, or other sizes, please contact Peerless. Assemblies tested to 100 psi.

Inside Diameter (in.)	Outside Diameter (in.)	Static Min. Bend Radius (in.)	Dynamic Min. Bend Radius (in.)	Working Pressure (psi)	Burst Pressure (psi)	Weight Per Foot (lbs.)
1/4	.48	0.9	3.7	1800	7233	0.14
3/8	.71	1.0	4.0	1558	6230	0.30
1/2	0.83	1.2	4.4	1886	4743	0.33
3/4	1.22	1.7	6.4	898	3591	0.51
1	1.53	2.1	7.1	718	2872	0.69
1 1/4	1.83	2.5	7.9	645	2581	0.88
1 1/2	2.16	3.1	8.7	531	2125	1.20
2	2.69	4.0	10.3	449	1797	1.47
3	3.98	6.3	14.5	346	1384	2.72

Note: The minimum bend radius is measured from the centerline of the hose. The minimum bend radius increases with pressure (chart available). The working pressure decreases with temperature (chart available). Technical data is meant to be used as a guide. If more specific information is required, please consult Peerless. \*Consult chemical resistant table (available).



# Most Flexible Stainless Steel Hose

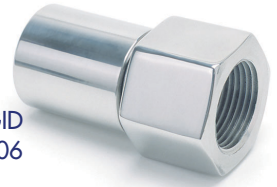


# Choose Your Fittings

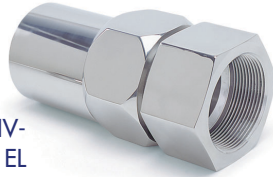
MALE PIPE RIGID  
STYLE 03



FEMALE PIPE RIGID  
STYLE 06



FEMALE NPT SWIV-  
EL



MALE NPT SWIVEL  
STYLE 36



FEMALE JIC  
STYLE 30



FLARE SEAL  
FLANGE RETAINER  
STYLE 29



FEMALE KAMLOK  
STYLE 07



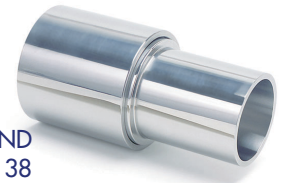
MALE KAMLOK  
STYLE 08



SANITARY TRI-CLAMP®  
STYLE 40



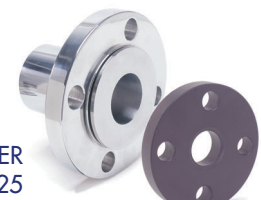
TUBE END  
STYLE 38



FIXED FLANGE  
STYLE 91



FLANGE RETAINER  
STYLE 25



Many other fitting styles and materials are available. Please contact Peerless for more information.

# Fittings



# Rubber Covered Teflon® Hose

Page International's smooth Teflon® tube is reinforced with a multi-layered rubber, polyester cord and double helix wire support. The hose can be grounded via it's internal helical wires and is available with white Teflon®, or conductive black where electrostatic dissipation is required. The wire helix supports full vacuum service.



### Features:

- Standard purple or grey EPDM Cover
- Custom colors available
- Temperature range of -110°F (-73°C) to +300°F (140°C)
- Full vacuum
- Sizes 1/2" to 4" I.D.
- Corrosion resistant
- Sanitary
- Cleanable
- Durable
- Many standard fitting styles available: flanged, sanitary, JIC, NPT, Kamlok, encapsulated

### Typical Applications:

- Chemical Processing\*
- Food Processing
- Pharmaceuticals
- Tank Truck Transfer
- Electronics
- Aerospace
- Cosmetics
- Petrochemicals
- Dairy

### Rubber Covered Teflon® Hose

The following data pertains to common I.D.'s for Rubber Covered Teflon® Hose.

Inside Diameter (in.)	Outside Diameter (in.)	Static Min. Bend Radius (in.)	Dynamic Min. Bend Radius (in.)	Working Pressure (psi)	Burst Pressure (psi)	Weight Per Foot (lbs.)
1/2	.95	3.0	29.9	500	2000	.33
3/4	1.25	6.0	29.9	500	2000	.48
1	1.53	8.0	29.9	450	1800	.68
1 1/4	1.74	11.0	29.9	375	1500	.74
1 1/2	2.13	12.0	29.9	375	1500	1.10
2	2.68	16.0	29.9	300	1200	1.47
3	3.88	28.0	29.9	200	1000	2.87

Note: The minimum bend radius is measured from the centerline of the hose. The minimum bend radius increases with pressure (chart available). Working pressure is at 72°F. Technical data is meant to be used as a guide. If more specific information is required, please consult Peerless. \*Consult chemical resistant table (available).

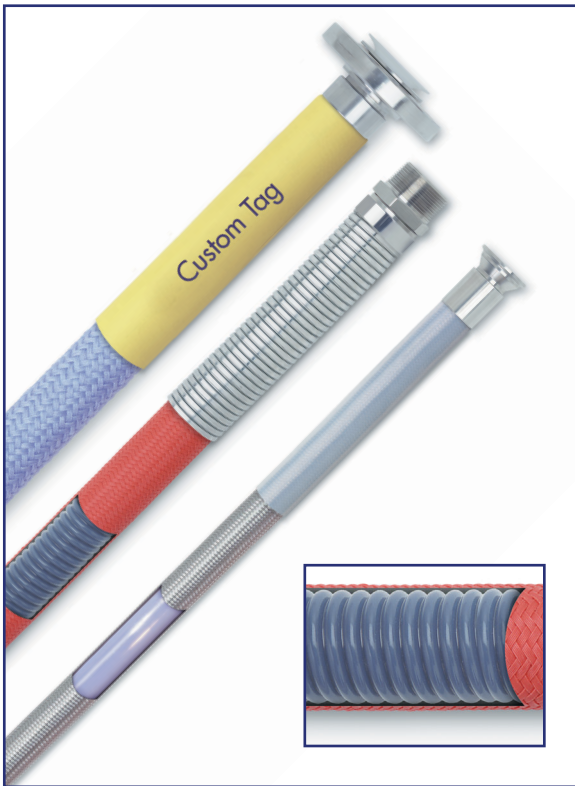


# Rubber Covered Teflon® Hose

# Braided Teflon® Hose

Page International **smooth bore** hose is constructed of an extruded Virgin PTFE Teflon® inner core reinforced with a tightly woven stainless steel braid. The braid serves a dual purpose, it provides a protective covering and allows the hose to carry substantial pressure.

Page International Braided, seamless **convoluted** Teflon® hose provides outstanding strength and flexibility and is designed and manufactured from thick walled Teflon® that is open pitched and self draining. A thicker inner core prolongs the life of the hose and adds additional crush and kink resistance



## Smooth Bore:

- Standard and heavy wall available
- Non-conductive or conductive
- Wide variety of swaged fittings
- Sizes 1/4" to 2"
- Stainless steel, monel, bronze, carbon steel, Nomex®, Kevlar®, Kynar®, Peek & Nylon braiding available
- Double braid for higher pressure
- Protective coverings: silicone, polyolfin, spring guards and interlocked casings available

## Convoluted:

- Very flexible
- Self draining
- Non-conductive or conductive
- Sizes 1/2" to 2"
- Wide variety of swaged fittings
- Stainless steel, monel, bronze, carbon steel, Nomex®, Kevlar®, Kynar®, Peek & Nylon braiding available
- Double braid for higher pressure
- Protective coverings: silicone, polyolfin, spring guards and interlocked casings available

### Sample Data for Stainless Steel Braided Smooth Bore, 0.30 Standard Wall

Contact Peerless for complete specifications.

Nominal Size	Inside Diameter (in.)	Outside Diameter (in.)	Static Min. Bend Radius (in.)	Working Pressure (psi)	Burst Pressure (psi)
1/2	0.500	0.635	6.50	1750	7000

### Sample Data for Stainless Steel Braided Convoluted, Natural and Conductive

Contact Peerless for complete specifications.

Nominal Size	Inside Diameter (in.)	Outside Diameter (in.)	Static Min. Bend Radius (in.)	Working Pressure (psi)	Burst Pressure (psi)
1/2	0.500	0.69	1.50	1500	6000

Note: The minimum bend radius is measured from the centerline of the hose. The minimum bend radius increases with pressure (chart available). Working pressure is at 72°F. Technical data is meant to be used as a guide. If more specific information is required, please consult Peerless. \*Consult chemical resistant table (available).

# Braided Teflon® Hose



OVERALL LENGTH

# How to Order

3	2	S	4	0	4	4	0	4	0	0			
<b>SIZE*</b>			<b>END #1</b>			<b>END #2</b>			<b>FLANGES</b>		<b>LENGTH</b>		
1/4" ..... <b>04</b> 3/8" ..... <b>06</b> 1/2" ..... <b>08</b> 3/4" ..... <b>12</b> 1" ..... <b>16</b> 1 1/4" ..... <b>20</b> 1 1/2" ..... <b>24</b> 2" ..... <b>32</b> 2 1/2" ..... <b>40</b> 3" ..... <b>48</b> 4" ..... <b>64</b> 6" ..... <b>96</b>			Male Pipe Rigid .... <b>03</b> Female Pipe Rigid.. <b>06</b> Female JIC ..... <b>30</b> Male NPT Swivel... <b>33</b> Female NPT Swivel ..... <b>36</b> Kamlok Female..... <b>07</b> Kamlok Male ..... <b>08</b> Sanitary Triclamp .. <b>40</b> Tube End ..... <b>38</b>  FLANGE END METAL HOSE Stub End ..... <b>90</b> Fixed Flange..... <b>91</b>  FLANGE END TEFLON HOSE Flange Retainer .... <b>25</b> Flare Seal - Flange Reatiner .... <b>29</b>			Male Pipe Rigid .... <b>03</b> Female Pipe Rigid.. <b>06</b> Female JIC ..... <b>30</b> Male NPT Swivel... <b>33</b> Female NPT Swivel ..... <b>36</b> Kamlok Female..... <b>07</b> Kamlok Male ..... <b>08</b> Sanitary Triclamp .. <b>40</b> Tube End ..... <b>38</b>  FLANGE END METAL HOSE Stub End ..... <b>90</b> Fixed Flange..... <b>91</b>  FLANGE END TEFLON HOSE Flange Retainer .... <b>25</b> Flare Seal - Flange Reatiner .... <b>29</b>			Carbon Steel #150 ..... <b>80</b> Carbon Steel #300 ..... <b>81</b> 304 SS #150 ..... <b>82</b> 304 SS #300 ..... <b>83</b> 316 SS #150 ..... <b>84</b> 316 SS #300 ..... <b>85</b> None ..... <b>00</b>		(Inches)		
<b>HOSE CODE</b>			<b>MATERIAL</b>			<b>MATERIAL</b>							
<b>TEFLON</b> Smooth Bore ..... <b>S</b> Convuluted ..... <b>T</b> Rubber Covered Grey ..... <b>G</b> Rubber Covered Purple..... <b>P</b>  <b>METAL HOSE</b> Annuflex T321 ..... <b>A</b> Annuflex T316L..... <b>B</b> Masterflex T321 ..... <b>C</b> Masterflex T316L .... <b>D</b>			304SS ..... <b>4</b> 316SS ..... <b>6</b> Carbon Steel..... <b>C</b>			304SS ..... <b>4</b> 316SS ..... <b>6</b> Carbon Steel..... <b>C</b>							

\* See hose pages for size availability.  
Consult a Peerless representative for items not shown.

## Need It Quick?

Ask for



Expedited Fabrication & Delivery



**PEERLESS M.S. CO., INC.**

79 Perry Street Buffalo NY 14203 Telephone (716) 852-4784 Fax (716) 852-5458 info@peerless-inc.com



# 1.800.234.3033